

Glenville State University Faculty Senate Meeting Minutes

Date: May 6, 2024

I. Call to Order and Roll

- a. President Maureen Gildein called the meeting to order at 1:00 pm in MCCC 315 and via Teams.
- b. Senators in attendance: Maureen Gildein, Schuyler Chapman, Jennifer Wenner, Mark Sarver, Duane Chapman, Kandas Queen, David Lewis (online), Shelly Ratliff, Nabil Nasserri (online), Josh Squires (online), Scott Beatty (online), Pai Song (online)
- c. Others in attendance: JD Carpenter (online)

II. Approval of Minutes

- a. Wenner moved to approve the meeting minutes from the 4/23, meeting. S. Chapman seconded.
- b. All voted in favor of accepting the minutes. Motion passes.

III. Reports

- a. Officers
 - i. Gildein welcomed us and other officers did not have any updates.
- b. Board of Governors (Duane Chapman)
 - i. D. Chapman said
- c. ACF (Kandas Queen)
 - i. Queen said she would send out notes from the last meeting.

IV. Old Business

- a) Semester Credit Hour
 - i) There was discussion about the intention of the policy. There was discussion about credit hours for work experience/internships.
 - (1) Senate decided that it's good as is. The definitions of experiential learning should be defined in the catalog however.
- b) Military Leave of Absence
 - i) Reflects longstanding practice of the registrar and it follows Series 56 from HEPC
 - (1) Senate decided that it looked good.
- c) Military Student Withdrawal
 - i) There was discussion of whether or not there should be an option for students to negotiate an arranged completion of the course. That is, in point #2, there could be an addition of another option that students could complete the requirements for the course.

This option may be implied by the “may choose to.” Also, students could take an incomplete and complete the work even though they were withdrawn.

(1) Senate was satisfied with it as is.

V. New Business

a. Student Complaint

i. D. Chapman said that this should be handled by the Student Life Committee, rather than academics. He was not clear why there should be another committee. Gildein informed that the Student Life Committee has not been active. D. Chapman said that the Student Life Committee at least has by-laws which maintains some structure and form.

1. Senate would like it to go back and see if there was pre-existing policy that put this under Student Life.

b. Request for Leave of Absence

i. Wenner asked who would be able to complete the form. (Would anyone be able to fill it out on a student’s behalf.)

1. Senate thought it looked good.

c. Leave of Absence Policy

i. There was a question about whether the form should go to each faculty or whether the advisor should sign off on it.

ii. Senate is okay with the policy, but dissatisfied with the form.

1. Senate would like to recommend an advisor signature and a list for classes/instructor with check boxes (yes/no approval).

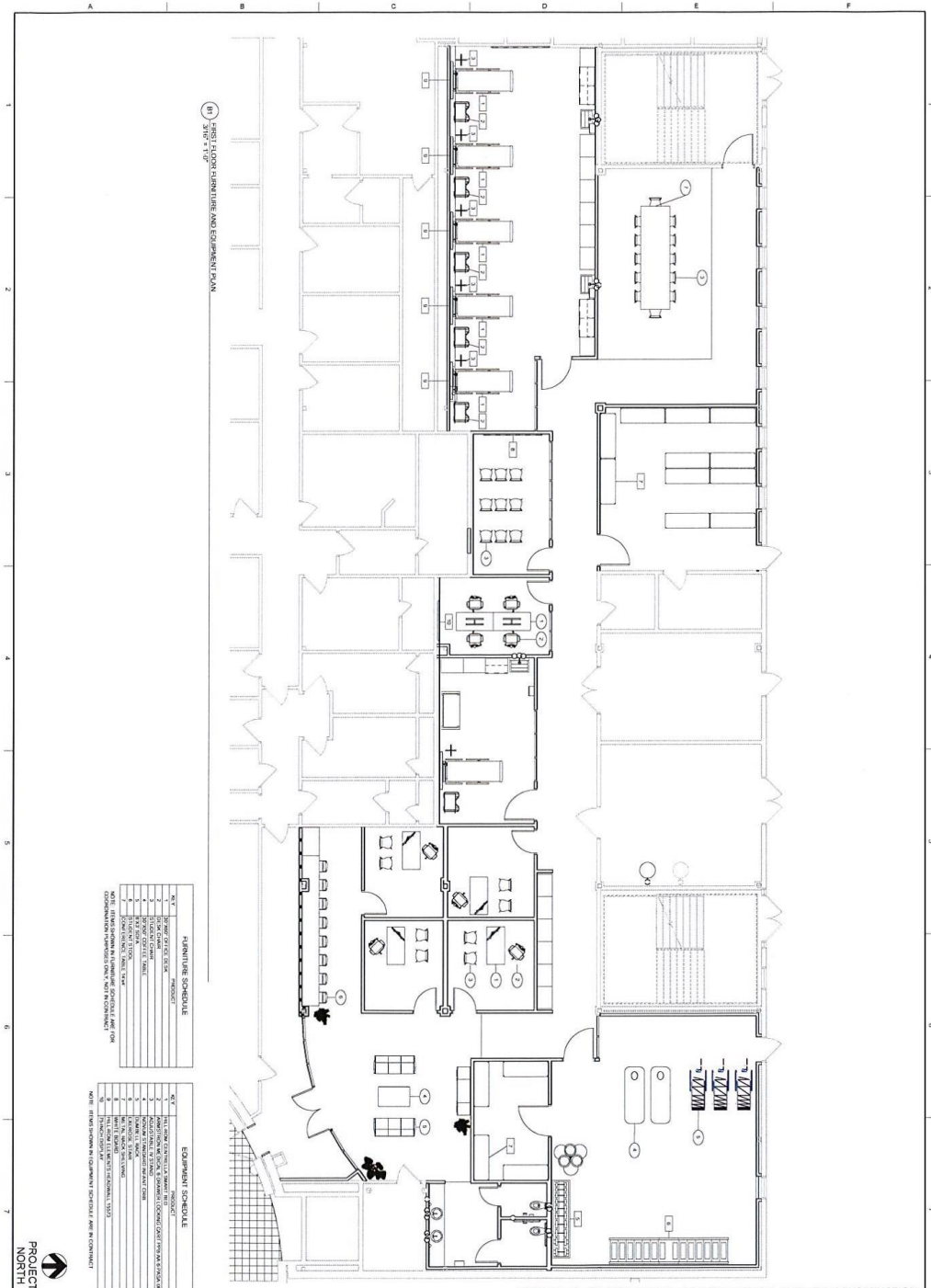
d. Administrative Procedure 1

i. Academic Policy approved and SGA sent it back with edits. D. Chapman asked whether a lawyer has looked at this. University Counsel has.

1. Senate registered concerns. It’s being returned.

VI. Adjournment

a. Gildein adjourned the meeting at 2:19 pm.



(H) FIRST FLOOR FURNITURE AND EQUIPMENT PLAN

FURNITURE SCHEDULE

NO.	DESCRIPTION	QUANTITY
1	SEMI-CIRCLE TABLE	1
2	RECTANGULAR TABLE	1
3	RECTANGULAR TABLE	1
4	RECTANGULAR TABLE	1
5	RECTANGULAR TABLE	1
6	RECTANGULAR TABLE	1
7	RECTANGULAR TABLE	1

EQUIPMENT SCHEDULE

NO.	DESCRIPTION	QUANTITY
1	RECEPTION DESK	1
2	RECEPTION CHAIRS	1
3	RECEPTION CHAIRS	1
4	RECEPTION CHAIRS	1
5	RECEPTION CHAIRS	1
6	RECEPTION CHAIRS	1
7	RECEPTION CHAIRS	1

NOTE: SEE SCHEDULES IN EQUIPMENT SCHEDULE AND IN CONTRACT.

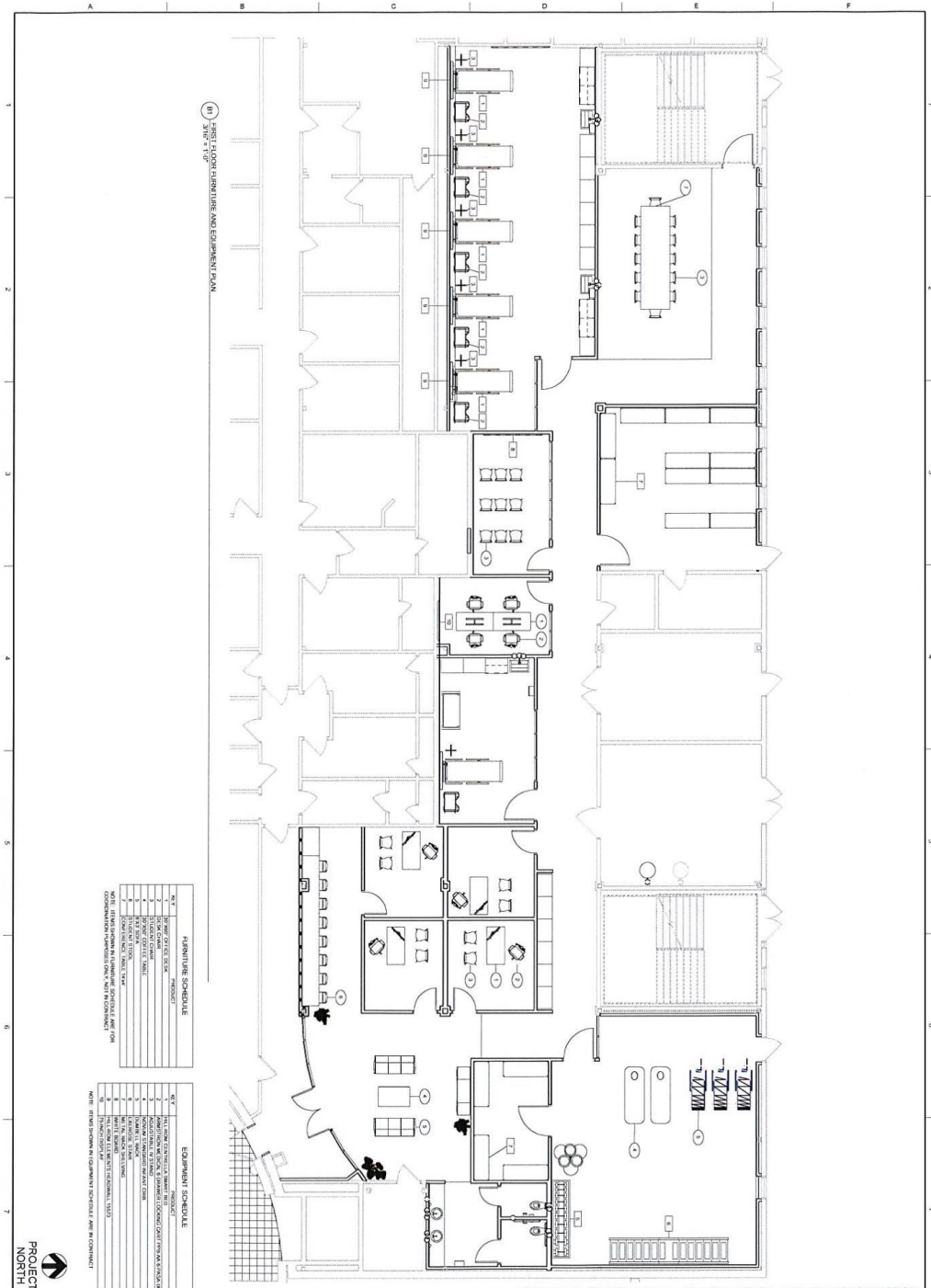
CONSTRUCTION DOCUMENT PHASE SUBMISSION - NOT FOR CONSTRUCTION

PROJECT NORTH
A7.01

McKINLEY
ARCHITECTURE + ENGINEERING
(304) 233-0140 projects@mckinleydelivers.com

TITLE: FIRST FLOOR FURNISHING & EQUIPMENT PLAN
PROJECT: GSU COLLEGE OF HEALTH SCIENCES
921 MINERAL ROAD
GLENVILLE, WV 26351

NO.	REVISION	DATE



(H) FIRST FLOOR FURNITURE AND EQUIPMENT PLAN

FURNITURE SCHEDULE

NO.	DESCRIPTION	QUANTITY
1	SEMI-CIRCULAR TABLE	1
2	RECTANGULAR TABLE	1
3	RECTANGULAR TABLE	1
4	RECTANGULAR TABLE	1
5	RECTANGULAR TABLE	1
6	RECTANGULAR TABLE	1
7	RECTANGULAR TABLE	1

EQUIPMENT SCHEDULE

NO.	DESCRIPTION	QUANTITY
1	RECEPTION DESK	1
2	RECEPTION CHAIR	1
3	RECEPTION CHAIR	1
4	RECEPTION CHAIR	1
5	RECEPTION CHAIR	1
6	RECEPTION CHAIR	1
7	RECEPTION CHAIR	1

NOTE: SEE SCHEDULES IN EQUIPMENT SCHEDULE AND IN CONTRACT.

CONSTRUCTION DOCUMENT PHASE SUBMISSION - NOT FOR CONSTRUCTION

PROJECT NORTH
A7.01

McKINLEY
ARCHITECTURE + ENGINEERING
(304) 233-0140 projects@mckinleydelivers.com

TITLE: FIRST FLOOR FURNISHING & EQUIPMENT PLAN
PROJECT: GSU COLLEGE OF HEALTH SCIENCES
921 MINERAL ROAD
GLENVILLE, WV 26351

NO.	REVISION	DATE

Department Legend

- OFFICE
- PHYSICAL THERAPY
- RESTROOM
- CLASSROOM
- CONTROL ROOM
- FLEX WORKSPACE
- ICU SIM
- LOUNGE
- STORAGE
- UTILITIES



SPACE UTILIZATION PLAN